

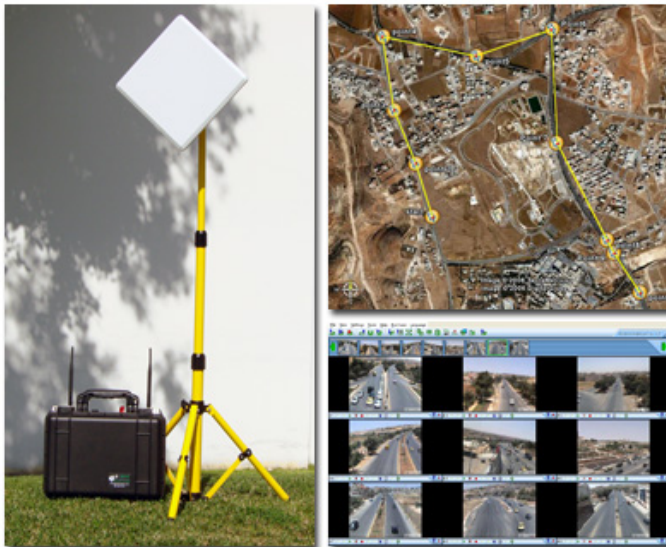
News Release: for immediate release

**Global Mesh Technologies Adds WiMax to Its CAMMS™ DFK
 (Deployable Field Kit) Mesh Communications Products**

Santa Ana, CA February 27th, 2008 – Following GMT’s successful deployment of a CAMMS™ wireless communications solution utilizing WiMax and WiFi over a 27 km radius in Amman, Jordan and further functional testing over the past 18 months, GMT is pleased to announce the release of their new, portable wireless communications product for public safety agencies: the CAMMS™DFK-LR

(Deployable Field Kit-Long Range). The new CAMMS™ DFK-LR offers a dramatic increase in range for data transmission and communications for public safety agencies.

In a recent survey conducted by APCO (Association of Public Safety Communications Officials), both urban and rural public safety agencies cited the need for improved range of their communications technologies.



(Clockwise from left) CAMMS™ DFK-LR, aerial view of actual deployment, screenshot of live video from multiple cameras

“By utilizing a transmission method that includes the use of WiMax backhaul combined with distribution over WiFi 2.4 GHz and 4.9 GHz (public safety) we have achieved a huge advantage for rapid deployable communications equipment for incident command situations”, stated Jerry Underhill, President of GMT. “While our CAMMS™ products enable complete incident coverage utilizing car-to-car and car-to-handheld client coverage, we now offer the ability to greatly increase coverage at that incident – in some cases up to 20 miles between each WiMAX node deployed. Our range is almost limitless; this is an incident commander’s dream come true.”

CAMMS™ (patent-pending) software and hardware products provide many ways in which first responders can communicate and share incident-specific information. Standard CAMMS™ features include: instant mesh network formation, IP camera discovery, white boarding, file transfer, GPS-AVL, TerraViewer mapping, one-click video conferencing, VoIP Phone connectivity and resource management.



“A very broad common operational picture can be achieved by utilizing CAMMS™ software and the CAMMS™ DFK-LR” continued Mr. Underhill. “Video Surveillance is one aspect. Video surveillance cameras can be deployed and video transmitted over a mesh, to a vehicle several miles from the targeted location. This provides enhanced safety to those involved in covert surveillance activities.”

CAMMS™ enables the instantaneous formation of a mesh network at an incident scene, with the further ability to broadcast this mesh to the Internet therefore enabling any computer running CAMMS™ and with Internet access – regardless of location – to interact, share and exchange data with other CAMMS™ users as if part of the incident mesh. However, when Internet infrastructure is not available and long range communication is required; the WiMax-enhanced DFK-LR will provide an exceptional increase in range for first responders.

GMT will be demonstrating CAMMS™ software and hardware products at the International Wireless Communications Expo (IWCE), booth # 1376 at the Las Vegas Convention Center from February 27–29, 2008.

###

About Global Mesh Technologies

Global Mesh Technologies (GMT) was formed to leverage products developed by its parent company, Large Screen Display Rentals LLC (LSDR). LSDR designs, engineers and manufactures custom large format video & data display systems and services both national and international customers. These systems are used primarily in command and control environments to display and share information. LSDR has manufactured systems for the National Hurricane Center, Dept. of Homeland Security, fire and police dispatch centers & utilities companies.

GMT developed its CAMMS™ (Command Anywhere Media Management System) products to enable interoperable communications for first responders, local, state and federal agencies who need to share incident-specific information and implement response coordination from mobile and/or remote locations.

The CAMMS™ product range includes software and hardware solutions for communications and data sharing in a variety of wired, wireless and mobile environments.

Contact

Jerry Underhill, President
3401 W MacArthur Blvd., Santa Ana, CA 92704
Ph: 714-481-0103 Fax: 714-546-8356
junderhill@globalmeshtec.com
www.globalmeshtec.com